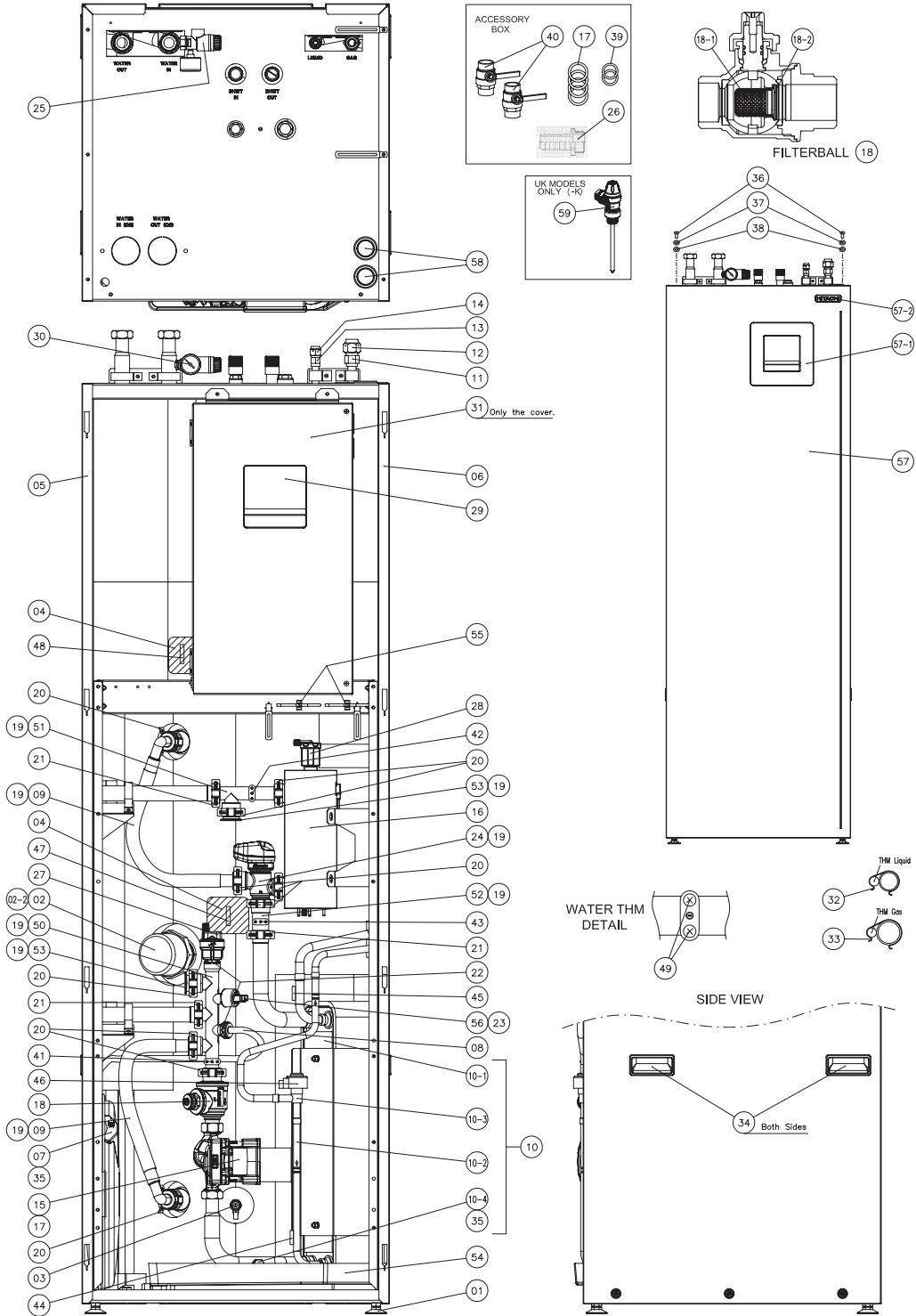


| No.  | DESCRIPTION          | DWG No.     | PART No | MODEL NAME                             |  |  |  |  |  | REMARKS                                   |
|------|----------------------|-------------|---------|--|--|--|--|--|--|---|
|      |                      |             |         | RWD-2.0RW1E-220S, 1~/3~ 230V/400V 50Hz | RWD-2.5RW1E-220S, 1~/3~ 230V/400V 50Hz | RWD-3.0RW1E-220S, 1~/3~ 230V/400V 50Hz | RWD-4.0NW1E-220S, 1~/3~ 230V/400V 50Hz | RWD-5.0NW1E-220S, 1~/3~ 230V/400V 50Hz | RWD-6.0NW1E-220S, 1~/3~ 230V/400V 50Hz |   |
|      |                      |             |         | PRODUCT CODE                           |  |  |  |  |  |   |
|      |                      |             |         | 7E483503                               | 7E483504                               | 7E483505                               | 7E483507                               | 7E483508                               | 7E483509                               |   |
| 1    | Foot                 | XEK38993 A  | E04869  | 4                                      | 4                                      | 4                                      | 4                                      | 4                                      | 4                                      |   |
| 2    | Tank Heater          | XEK51792 A  | E04088  | 1                                      | 1                                      | 1                                      | 1                                      | 1                                      | 1                                      | Tank Heater + Thermostat + O-Ring.        |
| 2-2  | O-Ring               | XEK51544 A  | E06116  | 1                                      | 1                                      | 1                                      | 1                                      | 1                                      | 1                                      | Only O-Ring for Tank Heater sealing.      |
| 3    | Drain Valve          | XEK52815 A  | E07086  | 1                                      | 1                                      | 1                                      | 1                                      | 1                                      | 1                                      |   |
| 4    | TH Insulation        | XEK27301 A  | E07087  | 2                                      | 2                                      | 2                                      | 2                                      | 2                                      | 2                                      | Cover for tank surface thermistors.       |
| 5    | Side Cover L         | XEK13396 A  | E07088  | 1                                      | 1                                      | 1                                      | 1                                      | 1                                      | 1                                      |   |
| 6    | Side Cover R         | XEK13397 A  | E07089  | 1                                      | 1                                      | 1                                      | 1                                      | 1                                      | 1                                      |   |
| 7    | Expansion Vessel 6L  | XEK27294 A  | E07090  | 1                                      | 1                                      | 1                                      | 1                                      | 1                                      | 1                                      |   |
| 8    | Flexible Pipe        | XEK27273 A  | E07091  | 1                                      | 1                                      | 1                                      | 1                                      | 1                                      | 1                                      | For Expansion Vessel.                     |
| 9    | Flexible Pipe        | XEK27272 A  | E07092  | 2                                      | 2                                      | 2                                      | 2                                      | 2                                      | 2                                      | For tank coil connections.                |
| 10   | Phex Unit            | XEK27311 A  | E07093  | 1                                      |  |  |  |  |  | Assembly.                                 |
| 10   | Phex Unit            | XEK27311 B  | E07094  |  | 1                                      |  |  |  |  | Assembly.                                 |
| 10   | Phex Unit            | XEK27311 C  | E07095  |  |  | 1                                      |  |  |  | Assembly.                                 |
| 10   | Phex Unit            | XEK27312 A  | E07096  |  |  |  | 1                                      |  |  | Assembly.                                 |
| 10   | Phex Unit            | XEK27312 B  | E07097  |  |  |  |  | 1                                      | 1                                      | Assembly.                                 |
| 10-1 | Plate Hex            | XEK25315 A  | E04974  | 1                                      |  |  |  |  |  |   |
| 10-1 | Plate Hex            | XEK25315 B  | E04975  |  | 1                                      |  |  |  |  |   |
| 10-1 | Plate Hex            | XEK25315 C  | E04896  |  |  | 1                                      |  |  |  |   |
| 10-1 | Plate Hex            | XEK26502 A  | E06535  |  |  |  | 1                                      |  |  |   |
| 10-1 | Plate Hex            | XEK26502 B  | E06536  |  |  |  |  | 1                                      | 1                                      |   |
| 10-2 | Expansion Valve Assy | XEK52717 A  | E07098  | 1                                      |  |  |  |  |  | Exp.Valve + Pipes + Strainers + Silencer. |
| 10-2 | Expansion Valve Assy | XEK52718 A  | E07099  |  | 1                                      | 1                                      |  |  |  | Exp.Valve + Pipes + Strainers + Silencer. |
| 10-2 | Expansion Valve Assy | XEK52719 A  | E07100  |  |  |  | 1                                      |  |  | Exp.Valve + Pipes + Strainers + Silencer. |
| 10-2 | Expansion Valve Assy | XEK52719 B  | E07101  |  |  |  |  | 1                                      | 1                                      | Exp.Valve + Pipes + Strainers + Silencer. |
| 10-3 | Expansion Valve      | X17F04391 A | E03076  | 1                                      |  |  |  |  |  |   |
| 10-3 | Expansion Valve      | X17F04392 A | E03077  |  | 1                                      | 1                                      | 1                                      |  |  |   |
| 10-3 | Expansion Valve      | X17F04393 A | E03078  |  |  |  |  | 1                                      | 1                                      |   |
| 10-4 | Seal Nut             | XEK37280 C  | E06198  | 1                                      | 1                                      | 1                                      | 1                                      | 1                                      | 1                                      |   |
| 11   | Union                | 27JR1717    | E02488  | 1                                      | 1                                      | 1                                      | 1                                      | 1                                      | 1                                      | Gas connection.                           |

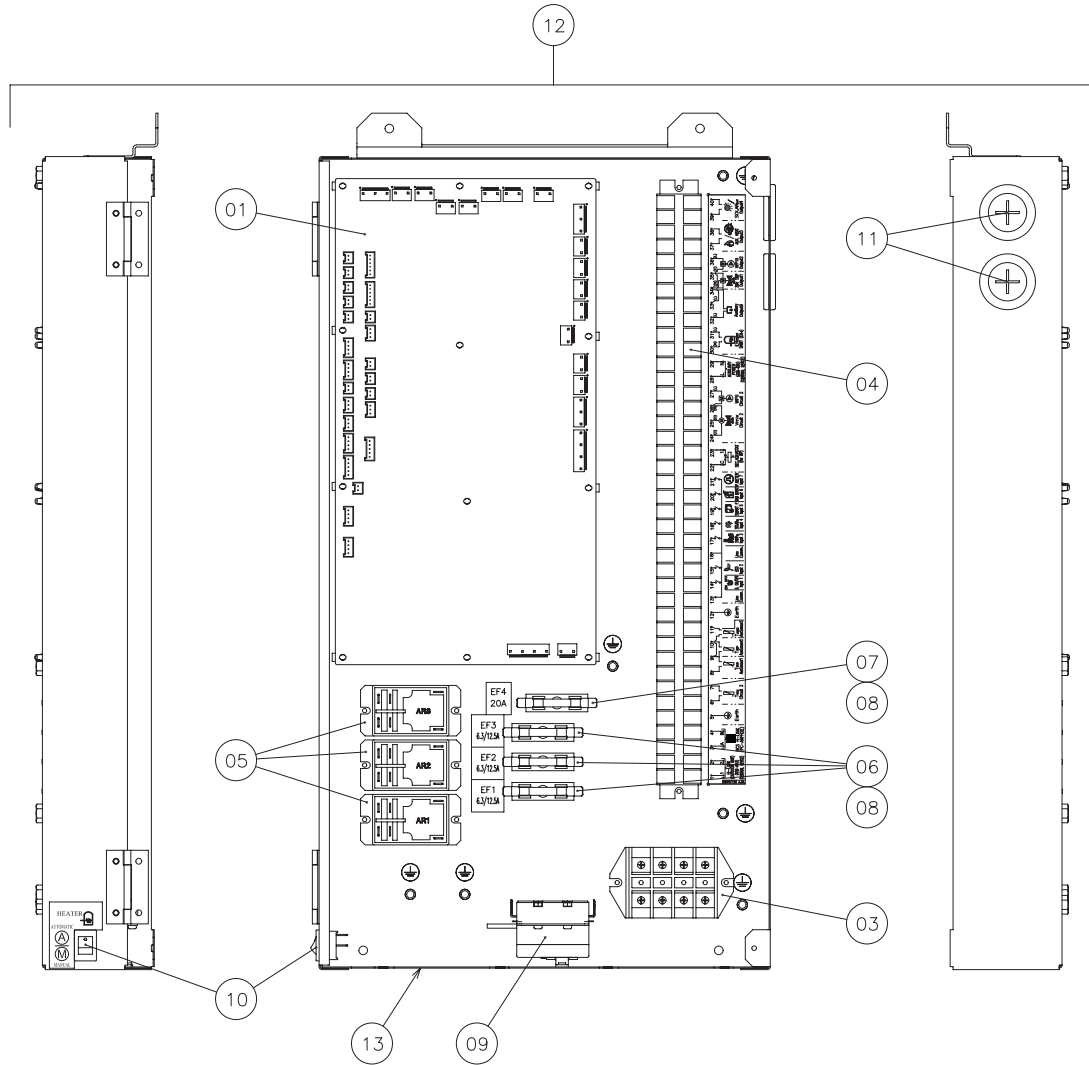
| No.  | DESCRIPTION       | DWG No.     | PART No | MODEL NAME                             |  |  |  |  |  | REMARKS                                   |
|------|-------------------|-------------|---------|--|--|--|--|--|--|---|
|      |                   |             |         | RWD-2.0RW1E-220S, 1~/3~ 230V/400V 50Hz | RWD-2.5RW1E-220S, 1~/3~ 230V/400V 50Hz | RWD-3.0RW1E-220S, 1~/3~ 230V/400V 50Hz | RWD-4.0NW1E-220S, 1~/3~ 230V/400V 50Hz | RWD-5.0NW1E-220S, 1~/3~ 230V/400V 50Hz | RWD-6.0NW1E-220S, 1~/3~ 230V/400V 50Hz |   |
|      |                   |             |         | PRODUCT CODE                           |  |  |  |  |  |   |
|      |                   |             |         | 7E483503                               | 7E483504                               | 7E483505                               | 7E483507                               | 7E483508                               | 7E483509                               |   |
| 12   | Flare Nut         | 17E20872 D  | R4227   | 1                                      | 1                                      | 1                                      | 1                                      | 1                                      | 1                                      | Gas connection.                           |
| 13   | Union             | 27JR0609    | E02935  | 1                                      |  |  |  |  |  | Liquid connection.                        |
| 13   | Union             | 27JR0913    | E02487  |  | 1                                      | 1                                      | 1                                      | 1                                      | 1                                      | Liquid connection.                        |
| 14   | Flare Nut         | 17E20872 A  | R4224   | 1                                      |  |  |  |  |  | Liquid connection.                        |
| 14   | Flare Nut         | 17E20872 B  | R4225   |  | 1                                      | 1                                      | 1                                      | 1                                      | 1                                      | Liquid connection.                        |
| 15   | Water Pump        | XEK27246 A  | E07102  | 1                                      | 1                                      | 1                                      |  |  |  |   |
| 15   | Water Pump        | XEK27247 A  | E07103  |  |  |  | 1                                      | 1                                      | 1                                      |   |
| 16   | Electric Heater   | XEK27248 A  | E07104  | 1                                      | 1                                      | 1                                      |  |  |  |   |
| 16   | Electric Heater   | XEK27249 A  | E07105  |  |  |  | 1                                      | 1                                      | 1                                      |   |
| 17   | Gasket            | XEK36144 B  | E03832  | 6                                      | 6                                      | 6                                      | 6                                      | 6                                      | 6                                      | For Pump and Shutdown Valves connections. |
| 18   | Filter Ball       | XEK27386 A  | E07106  | 1                                      | 1                                      | 1                                      | 1                                      | 1                                      | 1                                      |   |
| 18-1 | Filter            | XEK39398 B  | E04841  | 1                                      | 1                                      | 1                                      | 1                                      | 1                                      | 1                                      |   |
| 18-2 | Seeger            | XEK39399 B  | E04842  | 1                                      | 1                                      | 1                                      | 1                                      | 1                                      | 1                                      |   |
| 19   | O-Ring            | XEK52671D   | E07107  | 13                                     | 13                                     | 13                                     | 13                                     | 13                                     | 13                                     | For Quick Connections sealing.            |
| 20   | Clamp             | XEK52689 A  | E07108  | 10                                     | 10                                     | 10                                     | 10                                     | 10                                     | 10                                     |   |
| 21   | Clamp             | XEK52690 A  | E07109  | 3                                      | 3                                      | 3                                      | 3                                      | 3                                      | 3                                      |   |
| 22   | Clamp             | XEK52691 A  | E07110  | 2                                      | 2                                      | 2                                      | 2                                      | 2                                      | 2                                      |   |
| 23   | Clamp             | XEK52692 A  | E07111  | 1                                      | 1                                      | 1                                      | 1                                      | 1                                      | 1                                      | For Pressure Sensor connection.           |
| 24   | 3 Way Valve       | XEK27300 A  | E07112  | 1                                      | 1                                      | 1                                      | 1                                      | 1                                      | 1                                      |   |
| 25   | Security Valve    | XEK52694 A  | E07113  | 1                                      | 1                                      | 1                                      | 1                                      | 1                                      | 1                                      |   |
| 26   | Union             | XEK36303 A  | E02507  | 1                                      | 1                                      | 1                                      | 1                                      | 1                                      | 1                                      |   |
| 27   | Air Purge         | XEK52688 A  | E07114  | 1                                      | 1                                      | 1                                      | 1                                      | 1                                      | 1                                      |   |
| 28   | Air Purge         | XEK50420 A  | E06307  | 1                                      | 1                                      | 1                                      | 1                                      | 1                                      | 1                                      |   |
| 29   | Remote Controller | XEK52902 A  | E07225  | 1                                      | 1                                      | 1                                      | 1                                      | 1                                      | 1                                      |   |
| 30   | Manometer         | XEK52693 A  | E07116  | 1                                      | 1                                      | 1                                      | 1                                      | 1                                      | 1                                      |   |
| 31   | E-Box Cover Assy  | XEK52698 A  | E07117  | 1                                      | 1                                      | 1                                      | 1                                      | 1                                      | 1                                      | Plate + Labels.                           |
| 32   | P-Spring          | X17H31854 A | E02549  | 1                                      | 1                                      | 1                                      | 1                                      | 1                                      | 1                                      |   |
| 33   | P-Spring          | X17G27651 C | E02550  | 1                                      | 1                                      | 1                                      | 1                                      | 1                                      | 1                                      |   |
| 34   | Handle            | X17C71740 A | E01897  | 4                                      | 4                                      | 4                                      | 4                                      | 4                                      | 4                                      |   |

| No.  | DESCRIPTION           | DWG No.     | PART No | MODEL NAME                             |          |  |          |  |          | REMARKS                                |          |  |          |  |  |
|------|-----------------------|-------------|---------|--|----------|--|----------|--|----------|--|----------|--|----------|--|--|
|      |                       |             |         | Qty                                    | Qty      | Qty                                    | Qty      | Qty                                    | Qty      |  |          |  |          |  |  |
|      |                       |             |         | PRODUCT CODE                           |          |  |          |  |          |  |          |  |          |  |  |
|      |                       |             |         | RWD-2.0RW1E-220S, 1~/3~ 230V/400V 50Hz | 7E483503 | RWD-2.5RW1E-220S, 1~/3~ 230V/400V 50Hz | 7E483504 | RWD-3.0RW1E-220S, 1~/3~ 230V/400V 50Hz | 7E483505 | RWD-4.0NW1E-220S, 1~/3~ 230V/400V 50Hz | 7E483507 | RWD-5.0NW1E-220S, 1~/3~ 230V/400V 50Hz | 7E483508 | RWD-6.0NW1E-220S, 1~/3~ 230V/400V 50Hz | 7E483509                                 |
| 35   | Gasket                | XEK36144 A  | E02497  | 2                                      | 2        | 2                                      | 2        | 2                                      | 2        | 2                                      | 2        | 2                                      | 2        | 2                                      | For Vessel and Seal Nut connections.     |
| 36   | Screw                 | XEK40091 A  | E02501  | 2                                      | 2        | 2                                      | 2        | 2                                      | 2        | 2                                      | 2        | 2                                      | 2        | 2                                      |  |
| 37   | Washer                | 01VF0400    | E02548  | 2                                      | 2        | 2                                      | 2        | 2                                      | 2        | 2                                      | 2        | 2                                      | 2        | 2                                      |  |
| 38   | Nylon Washer          | XEK40093 B  | E02547  | 2                                      | 2        | 2                                      | 2        | 2                                      | 2        | 2                                      | 2        | 2                                      | 2        | 2                                      |  |
| 39   | Gasket                | XEK36144 E  | E04954  | 2                                      | 2        | 2                                      | 2        | 2                                      | 2        | 2                                      | 2        | 2                                      | 2        | 2                                      | For DHWT In/Out connections.             |
| 40   | Shutdown Valve        | XEK39401 A  | E05019  | 2                                      | 2        | 2                                      | 2        | 2                                      | 2        | 2                                      | 2        | 2                                      | 2        | 2                                      |  |
| 41   | Thermistor Assy       | XEK27251 A  | E07118  | 1                                      | 1        | 1                                      | 1        | 1                                      | 1        | 1                                      | 1        | 1                                      | 1        | 1                                      | Water In THM.                            |
| 42   | Thermistor Assy       | XEK27251 B  | E07119  | 1                                      | 1        | 1                                      | 1        | 1                                      | 1        | 1                                      | 1        | 1                                      | 1        | 1                                      | Water Out THM.                           |
| 43   | Thermistor Assy       | XEK27251 C  | E07120  | 1                                      | 1        | 1                                      | 1        | 1                                      | 1        | 1                                      | 1        | 1                                      | 1        | 1                                      | Water Out PHEX THM.                      |
| 44   | Thermistor Assy       | XEK26430 R  | E07121  | 1                                      | 1        | 1                                      | 1        | 1                                      | 1        | 1                                      | 1        | 1                                      | 1        | 1                                      | Liquid THM.                              |
| 45   | Thermistor Assy       | XEK26430 F  | E04982  | 1                                      | 1        | 1                                      | 1        | 1                                      | 1        | 1                                      | 1        | 1                                      | 1        | 1                                      | Gas THM.                                 |
| 46   | Exp. Valve Coil       | X17F04390 H | E04965  | 1                                      | 1        | 1                                      | 1        | 1                                      | 1        | 1                                      | 1        | 1                                      | 1        | 1                                      |  |
| 47   | Thermistor Assy       | XEK26452 P  | E07122  | 1                                      | 1        | 1                                      | 1        | 1                                      | 1        | 1                                      | 1        | 1                                      | 1        | 1                                      | Tank surface.                            |
| 48   | Thermistor Assy       | XEK26453 R  | E07123  | 1                                      | 1        | 1                                      | 1        | 1                                      | 1        | 1                                      | 1        | 1                                      | 1        | 1                                      | Tank surface.                            |
| 49   | Screw (Thermoplastic) | XEK52696 A  | E07124  | 6                                      | 6        | 6                                      | 6        | 6                                      | 6        | 6                                      | 6        | 6                                      | 6        | 6                                      | For water thermistors.                   |
| 50   | Composite 1           | XEK13391 A  | E07125  | 1                                      | 1        | 1                                      | 1        | 1                                      | 1        | 1                                      | 1        | 1                                      | 1        | 1                                      |  |
| 51   | Composite 2           | XEK27275 A  | E07126  | 1                                      | 1        | 1                                      | 1        | 1                                      | 1        | 1                                      | 1        | 1                                      | 1        | 1                                      |  |
| 52   | Composite 3           | XEK27276 A  | E07127  | 1                                      | 1        | 1                                      | 1        | 1                                      | 1        | 1                                      | 1        | 1                                      | 1        | 1                                      |  |
| 53   | Plug                  | XEK27277 A  | E07128  | 2                                      | 2        | 2                                      | 2        | 2                                      | 2        | 2                                      | 2        | 2                                      | 2        | 2                                      |  |
| 54   | Drain Pan             | XEK13392 A  | E07129  | 1                                      | 1        | 1                                      | 1        | 1                                      | 1        | 1                                      | 1        | 1                                      | 1        | 1                                      |  |
| 55   | Clamp                 | XEK31150 A  | E02012  | 2                                      | 2        | 2                                      | 2        | 2                                      | 2        | 2                                      | 2        | 2                                      | 2        | 2                                      |  |
| 56   | Pressure Sensor       | XEK27254 A  | E07227  | 1                                      | 1        | 1                                      | 1        | 1                                      | 1        | 1                                      | 1        | 1                                      | 1        | 1                                      |  |
| 57   | Service Cover Assy    | XEK27389 A  | E07131  | 1                                      | 1        | 1                                      | 1        | 1                                      | 1        | 1                                      | 1        | 1                                      | 1        | 1                                      | Service Cover + LCD Frame + Label        |
| 57-1 | LCD Frame             | XEK13393 A  | E07132  | 1                                      | 1        | 1                                      | 1        | 1                                      | 1        | 1                                      | 1        | 1                                      | 1        | 1                                      |  |
| 57-2 | Hitachi Label         | XEK52930 A  | E07226  | 1                                      | 1        | 1                                      | 1        | 1                                      | 1        | 1                                      | 1        | 1                                      | 1        | 1                                      |  |
| 58   | Rubber Bush           | X17D12070 F | E01999  | 2                                      | 2        | 2                                      | 2        | 2                                      | 2        | 2                                      | 2        | 2                                      | 2        | 2                                      |  |
| 59   | Pres. and Temp. Valve | XEK52573 A  | E06743  | -                                      | -        | -                                      | -        | -                                      | -        | -                                      | -        | -                                      | -        | -                                      | Used only for UK models (see next table) |

MODELS:  
 RWD-(2.0~3.0)RW1E-220S(-K)  
 RWD-(4.0~6.0)NW1E-220S(-K)



| No. | DESCRIPTION    | DWG No.     | PART No | MODEL NAME                          |                                     |                                     |  |  |  | REMARKS                          |
|-----|----------------|-------------|---------|-------------------------------------|-------------------------------------|-------------------------------------|--|--|--|----------------------------------|
|     |                |             |         | Qty                                 | Qty                                 | Qty                                 | Qty                                    | Qty                                    | Qty                                    |                                  |
|     |                |             |         | RWD-2.0RW1E-220S, 1~/3~ 230V/400V 5 | RWD-2.5RW1E-220S, 1~/3~ 230V/400V 5 | RWD-3.0RW1E-220S, 1~/3~ 230V/400V 5 | RWD-4.0NW1E-220S, 1~/3~ 230V/400V 50HZ | RWD-5.0NW1E-220S, 1~/3~ 230V/400V 50HZ | RWD-6.0NW1E-220S, 1~/3~ 230V/400V 50HZ |                                  |
|     |                |             |         |                                     |                                     |                                     | 7E483507                               | 7E483508                               | 7E483509                               |                                  |
| 1   | PCB            | XEK52730 A  | E07070  | 1                                   | 1                                   | 1                                   | 1                                      | 1                                      | 1                                      |                                  |
| 2   | Spacer         | XEK34315 A  | E01789  | 12                                  | 12                                  | 12                                  | 12                                     | 12                                     | 12                                     |                                  |
| 3   | Terminal Board | XEK34375 A  | E02519  | 1                                   | 1                                   | 1                                   | 1                                      | 1                                      | 1                                      |                                  |
| 4   | Terminal Board | X17P00835 O | E04778  | 1                                   | 1                                   | 1                                   | 1                                      | 1                                      | 1                                      |                                  |
| 5   | Relay          | XEK39260 A  | E04779  | 3                                   | 3                                   | 3                                   | 3                                      | 3                                      | 3                                      |                                  |
| 6   | Fuse           | XEK39253 A  | E04780  | 3                                   | 3                                   | 3                                   |  |  |  | 6,3A                             |
| 6   | Fuse           | XEK39253 B  | E04781  |                                     |                                     |                                     | 3                                      | 3                                      | 3                                      | 12,5A                            |
| 7   | Fuse           | XEK39253 D  | E04782  | 1                                   | 1                                   | 1                                   | 1                                      | 1                                      | 1                                      | 20A                              |
| 8   | Fuse Holder    | X17C68766 A | E02516  | 4                                   | 4                                   | 4                                   | 4                                      | 4                                      | 4                                      |                                  |
| 9   | Thermostat     | XEK39254 A  | E04785  | 1                                   | 1                                   | 1                                   | 1                                      | 1                                      | 1                                      |                                  |
| 10  | Rocker Switch  | XEK52821 A  | E07134  | 1                                   | 1                                   | 1                                   | 1                                      | 1                                      | 1                                      |                                  |
| 11  | Rubber Bush    | XEK32468 A  | E02060  | 2                                   | 2                                   | 2                                   | 2                                      | 2                                      | 2                                      |                                  |
| 12  | Electrical Box | XEK01834 A  | E07135  | 1                                   | 1                                   | 1                                   |  |  |  | Assembly (Components + Harness). |
| 12  | Electrical Box | XEK01834 B  | E07136  |                                     |                                     |                                     | 1                                      | 1                                      | 1                                      | Assembly (Components + Harness). |
| 13  | E-Box Subassy  | XEK27296 A  | E07137  | 1                                   | 1                                   | 1                                   | 1                                      | 1                                      | 1                                      | Only plate (without components). |



E-Box plate

