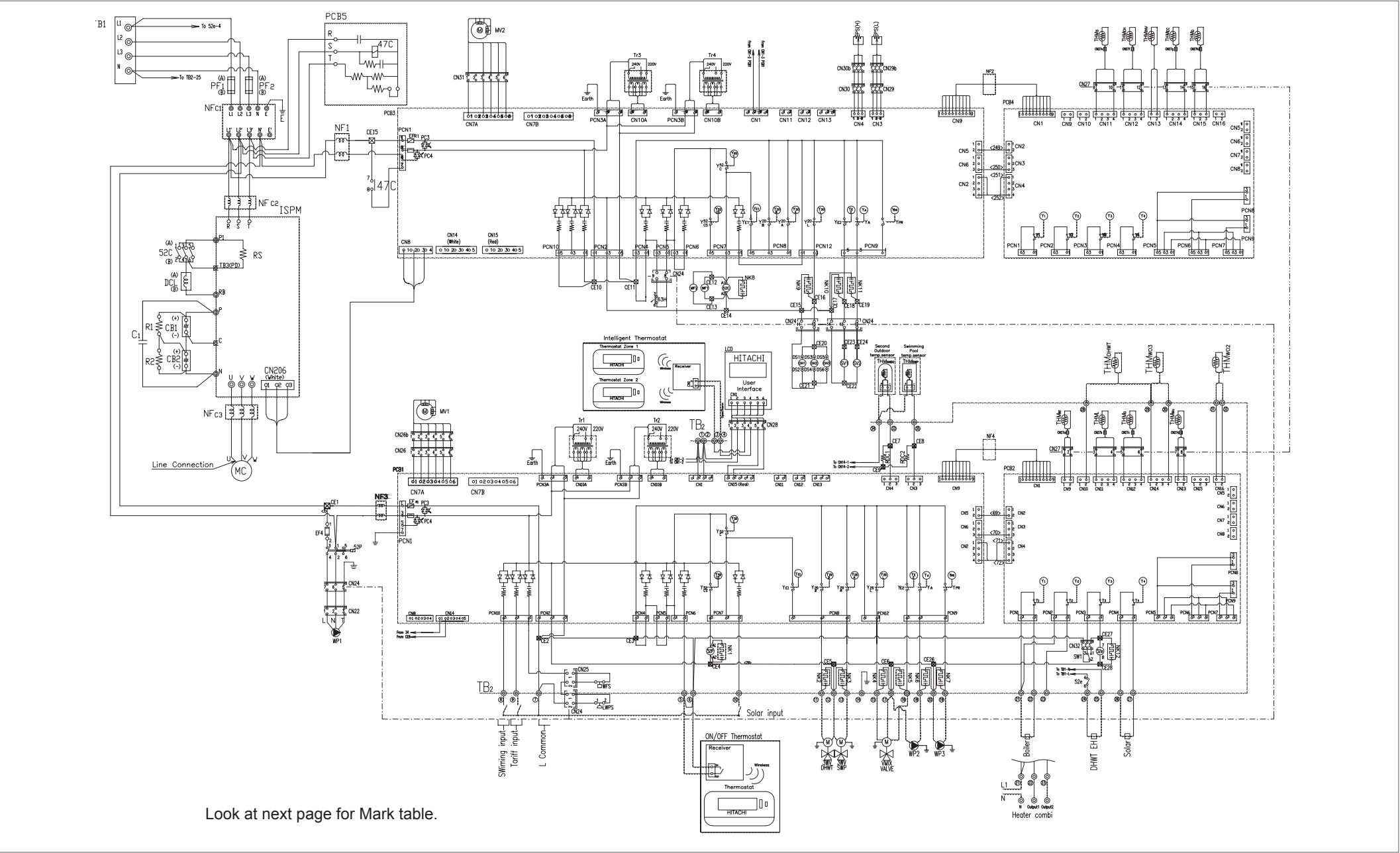
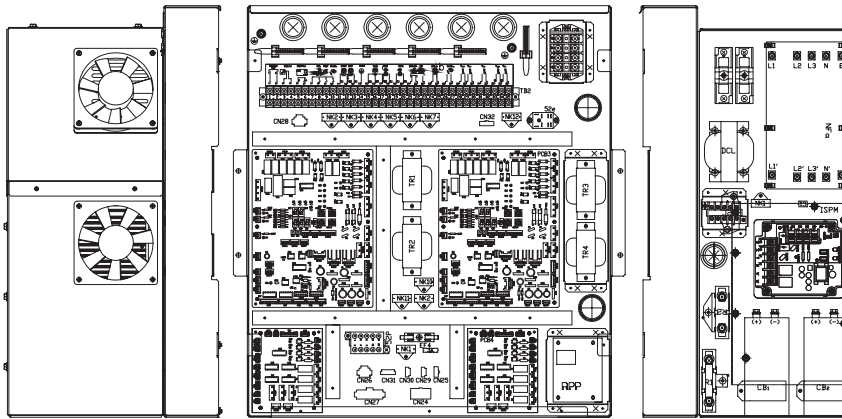


# SCHALTPLAN RWH-(4.0-6.0)FSNFE



Look at next page for Mark table.

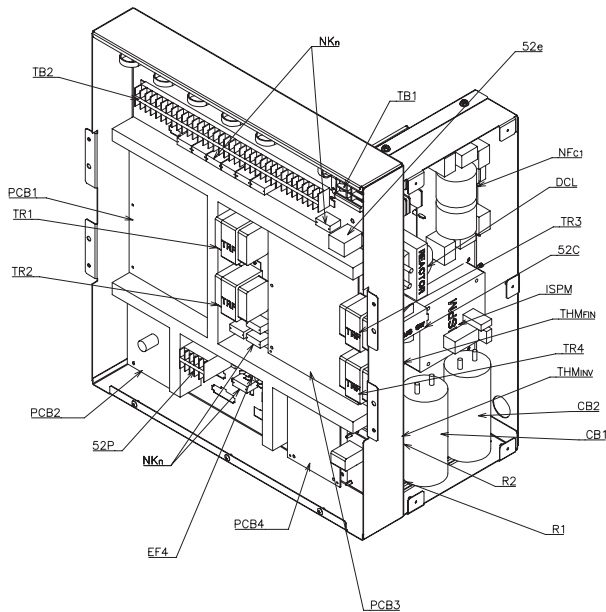
Arrangement of Electric Parts in Electrical Control Box



Mark Table

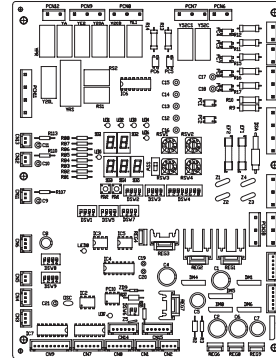
Mark	Part Name
TB 1	Terminal Board (for Power Supply)
TB 2	Terminal Board (for Control Circuit)
PCB1	Printed Wiring Board (for Main Control 1cycle)
PCB2	Printed Wiring Board (for I/O 1cycle)
PCB3	Printed Wiring Board (for Main Control 2cycle)
PCB4	Printed Wiring Board (for I/O 2cycle)
PF 1	Power Fuse for Compressor
NF C1	Noise Filter
RF 1-4,C2	Ring Core
DIP-IPM	Inverter Module
52C	Contact (for Compressor)
DC1	Reactor
MC	Motor (for Compressor)
CF 1-28	Connector (Terminating Connector)
CN 299,299,306	Connector
CN 2-31,22	Connector
MV 1-2	Electrical Expansion Valve
Tr 1-4	Transformers
PS (H)	High Pressure Sensor
PS (L)	Low Pressure Sensor
THMs	Thermistor (for Suction Gas Temperature)
THMeh	Thermistor (for Evaporating Gas Temperature)
THMaw	Thermistor (for ambient E-BOX Inv. temperature)
THMre	Thermistor (for Liquid refrigerant Temperature)
THMb	Thermistor (for Discharge Gas Temperature)
THMwi	Thermistor (for Inlet Water Temperature)
THMl	Thermistor (for liquid pipe temperature)
THMg	Thermistor (for Gas pipe temperature)
THMwo	Thermistor (for Outlet Water Temperature)
THMra	Thermistor (for Inverter FIN Temperature)
NK 1-12	Noise Killer
OH 1, 2, 3	Oil Heater
SV 1, 2	Solenoid Valve
MF 1, 2	Fan inverter E-BOX
63H	High Pressure Switch
LCD	User interface LCD
RDC 1, 2	Resistance
WFS	Water flow switch
LWPS	Low water pressure switch
WP	Water Pump
EF 4	Fuse Pump
52P	Relay (for Pump)
52e	Relay (for Domestic Hot Water Heater)
F	Earth
SW 1	Switch 1 (for DHWT Heater manual operation)
DSW	Dip-switch setting
EFR 1	Fuse
EF 5	Fuse
RSW 1-2	Refrigerant Cycle n°
RSW 3-4	Indoor Unit no. Settings
SEG 1-5	Seven segments indication
Y52 as	Relay for Water Pump (WP)
Y2ah	Relay for 3 way valve DHWT
Y2a	Relay for 3 way valve SWP
Y2al	Relay for Mixing valve left
Y2r	Relay for Mixing valve right
Y4	Relay for Water Pump 2
Y3	Relay for Water Pump 3
Y1	Relay for Boiler/Heater combination
Y2	Relay for Heater combination
Y1	Relay for DHWT Electrical Heater
Y4	Relay for Solar combination
Y52 e	Relay for Inverter 2 cycle
Y2al	Relay for Oil Heater
Y2	Relay for Solenoid Valve 1
Y4	Relay for Solenoid Valve 1
⊙	Terminals
— —	Close-end Connector
— /—	Field Supplied
— — —	Field Wiring
— — — —	Earth Wiring
— — — — —	Factory Wiring

Location of main parts of electrical box

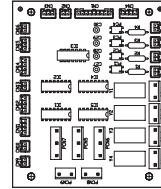


PCBs Sockets location

PCB1, PCB3



PCB2, PCB4



Location of main parts

